

## SYSTEM DESCRIPTION

Water handling is one of the critical steps of crude oil treatment. If the free water takes out at the first stage of treatment, the efficiency of downstream equipment would be higher.

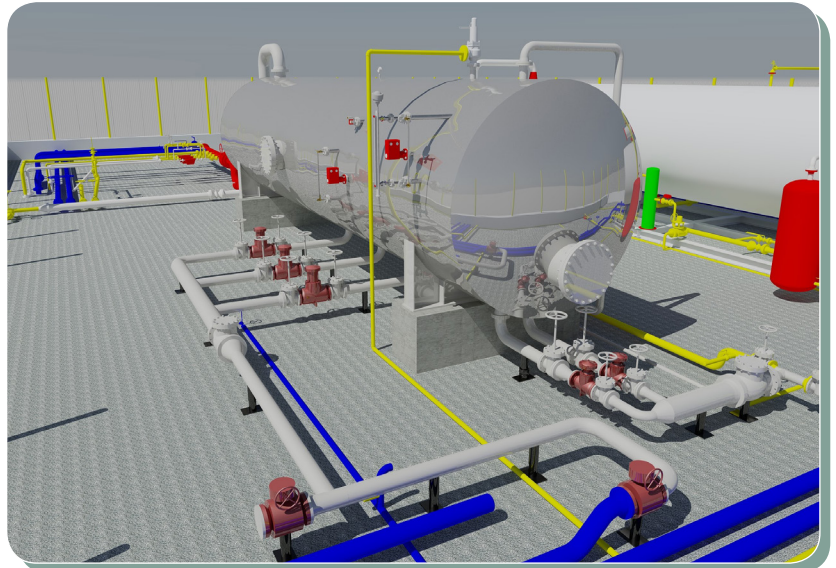
Troya is able to design and manufacture FWKO according to client's request.

Vessel lengths is designed to be used for longer retention time.

All inner equipment could be removed from man way.

Control equipment can be designed as per Operator's request and area capabilities from well-known manufacturer. All control system can be easily maintained during on duty with our high skilled service team. Digital Level Control System checks top liquid level. Up normal levels are saved for system control and evaluation.

FWKO's are designed with PV Elite and are built according to ASME VIII Div. 1 (ASME Code Version 2013).



Design Specifications	Standard Pressure	
Service	Standard and H <sub>2</sub> S	
Design Temperature (°C)	0-70	
Diameter (mm)	1,500	3,200
Length (mm)	6,000	13,000
Max Working Pressure (psia)	450	
Fluid Capacity (BPD)	20,000	60,000
Empty Weight (kg)	10,700	19,600

*Note: Various sizes and configurations available.*



Digital Level Control System